





# The PMU Education Kit

Hands-on training, available at your fingertips.



Train  
on YOUR  
time

SE Product Number: PMUTRAINLAB9

**NOT FOR RESALE - For Education Purposes Only.**  
Education Kits cannot be shipped internationally.

This kit is designed so that your staff can test code, create advanced frameworks, and gain more in-depth experience with the meters they use every day, without disrupting your facility's production environment.

This kit is also great for educational institutions specializing in power engineering and for individuals who need to demonstrate meter functionality.

## Kit includes:

- Training Lab Station
  - ION9000
  - PM8000
  - PM5500
- Instruction Guide
- Workbook
- Travel Case

To order, contact your sales rep or visit [pmutraining.com/educationKit.cfm](http://pmutraining.com/educationKit.cfm)

# Power Management University

## Where knowledge saves you money.

Whether you generate, transmit, distribute, or consume electricity, today’s energy market is more complex than ever. Schneider Electric™ provides comprehensive solutions to develop a long-term energy action plan for your business. Understanding these solutions is key to improving energy performance. Allow our professional training staff and training options to lead you on your journey to optimize performance and maximize the return on your investment.

- What is Power Management University (PMU)?
- Why do you need to attend a PMU training course?
- What type of training does PMU offer?
- How can you attend PMU training?

## Table of contents:

> Who is PMU? .....	4
> Training Options for the Customer.....	5
> PMU Website.....	6
> Factory Classes: EcoStruxure™ Power Monitoring Expert (PME) Software .....	7-10
Power Monitoring Operation	
Power Monitoring Administration and Maintenance	
Advanced Programming	
> Other Software Courses .....	10-12
Power Quality - Identification, Causation, and Mitigation	
Hardware Installation and Troubleshooting	
SMSTrainer	
EEMTrainer	
> On-Demand Campus.....	13
> Register for a Class.....	14-15





# Training Options for the Customer

## Online Training

### Virtual Instructor-Led Training (VILT)

If you are unable to travel or be away from your facility for multiple days of training, PMU now offers a *live* distance learning solution. Our VILT environment provides attendees the experience of in-classroom training to any location with a good internet connection.

This solution incorporates multiple live cameras and a hands-on lab feature that allows each attendee to have remote access to our actual training equipment and their own individually assigned lab station in our Franklin, TN training hub.

**4-Day Training Courses** - Our Factory Training options have been reformatted for this digital delivery format.

**PME Elective Series** - These 2-4 hour realtime workshops allow you to get hands-on experience in a variety of topics.

**Virtual On-site Training** - Customized training for your facility, delivered in an online format.



Visit [www.pmutraining.com/distancelearning.cfm](http://www.pmutraining.com/distancelearning.cfm) to learn more and to see which of our courses are available in the VILT format and register.

### On-Demand Campus:

On-Demand Campus is a paid subscription based offer that provides the customer with access to nearly 500 product how-to videos. PMU On-Demand Campus offers access to training anytime and anywhere with an internet connection.



Visit [www.pmutraining.com/online/](http://www.pmutraining.com/online/) to learn more about our On-Demand Campus.

## Classroom Training

### Factory Training

Our training center in Franklin, TN offers a variety of courses that teach students how to utilize and get the most from their Schneider Electric power monitoring products. Each course focuses on different roles and needs, from the product and our instructors train to the “Why” more than the “What.” Students develop proficiency through a variety of hands-on exercises and quality instruction. To learn more about our specific class offers, please go to the “Factory Training” section of this catalog.

In addition to the training, customers will be at the location where the products are designed, developed, and supported. Within this environment, face-time with people who can make a difference for you and your company is invaluable.



Go to the **Factory Training** section of this catalog to view the courses offered.

### PMUTV:

**These videos are free and can be shared with anyone who can benefit from the information presented.** They are designed to present information in an easy-to-understand, efficient manner.

**Karl's Corner** - Product-agnostic videos designed to teach the fundamentals and value of Power Monitoring.

**Get Connected** - Tips and tricks to help you make the most of your Power Monitoring Expert system.

**EcoStruxure Power** - Solve big picture problems by exploring case studies using the EcoStruxure Power system.

**The PowerBlock** - Broadcasts that cover specific hardware and software offers.

**Dr. ION** - Learn about Schneider Electric's offer for Utility Metering, including ION meters and software customization.

**Power Scada Operation Tutorials** - Learn about specific Power Scada software features.



Visit [www.pmutraining.com/pmutv.cfm](http://www.pmutraining.com/pmutv.cfm) and select to see all of the videos we offer.

### On-site Training

If you prefer a custom training agenda for multiple people focused on your system or you have a training budget without travel, then on-site training is your best solution. We offer flexible agendas that can separate training based on job function with the solution.

For example, one day we can focus on the operation of the software and how to extract and analyze data from the system. Another day, we can train meter techs or electricians on the meters and the communication installed at your site. Finally, we have agendas that specialize on system maintenance, customization, or special focused areas like Power Quality.

Our instructors will come to your site and either train you on your own system, on our demo equipment we ship to your site, or both. We will tailor the agenda to be focused entirely on the equipment you have and the objectives you want.

Pricing is based on the number of days needed. For pricing, contact us at (615) 538-9868.

# PMU Website



Be sure to visit our website to get the latest information on class schedules and course offerings.

From the website, one can:

- View course information
  - Determine your learning path
  - Check course schedules
  - Register for classes
  - Access On-Demand Campus
  - Find contact information
  - Access logistical information about our factory training center
  - Submit inquiries regarding custom Onsite or custom webinar training
- ... and much more.



Check it out at [www.pmutraining.com](http://www.pmutraining.com)

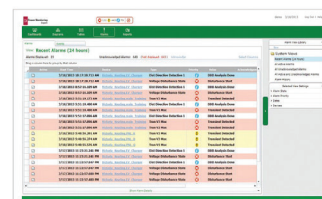
The PMU Learning Path tool can help you plan your power monitoring training journey.  
[www.pmutraining.com/learning-path](http://www.pmutraining.com/learning-path)



# Factory Classes: EcoStruxure Power Monitoring Expert Software



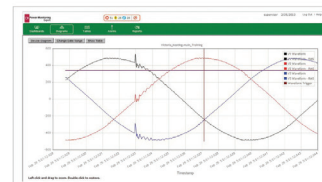
Attractive dashboard displays



Alarm and event displays



Historical trends



Power quality analyses

## EcoStruxure Power Monitoring Expert (PME) Operation

Course Reference Number: 3000PMUOPS100  
SE Product Number: 3000PLUC4DAY

### Overview (four days):

This 4-day overview course focuses on the what, how and why to use an EcoStruxure Power Monitoring Expert system. Students will be exposed to power monitoring fundamentals in order to set a baseline for class. Students will practice using PowerLogic and ION meter front panels to verify the configuration of devices that already exist in the system. In a hands-on lab environment, students will use the web applications offered in PME as they are featured in this class as the extraction and analysis of data is paramount.

Students will learn how to quickly extract and analyze data from their system using tools like the new Incident Alarm Viewer, Trends, Dashboards, Diagrams and Reporter. Utilize the web User Manager tool to add local users to PME. The course then moves on with an overview of one of the engineering clients, Management Console, to ensure the attendees understand how to add as well as remove devices from the PME system. The course concludes with a round-robin session to ensure that students "take away" one tangible item they will do when they get back to their location and their PME system.

### Delivery Type:

Classroom or VILT

### Who should attend?:

Anyone who will be/is using PME or migrating from our SMS platform or ION platforms.

### Prerequisites:

- Basic computer skills and experience with Microsoft Windows
- Basic metering terminology

### Students will be able to:

- Understand basic power fundamentals and terminology
- Verify the configuration of meters in a PME system
- Analyze historical loads and consumption using Diagrams
- Manage events and alarms in new Incident Alarm Viewer web tool
- Setup local users with the User Manager web tool
- Analyze power quality and waveform data in the new Waveform viewer
- Create, manage, and automate reports with Web Reporter
- Create and manage Trends in Trends web tool
- Create and manage Dashboard web tool

**EcoStruxure**  
Innovation at Every Level

# Factory Classes: EcoStruxure Power Monitoring Expert Software

## EcoStruxure Power Monitoring Expert (PME) Administration and Maintenance

Course Reference Number: 3000PMUADMIN200

SE Product Number: 3000PLUC4DAY

### Overview (four days):

This training curriculum focuses on teaching students to manage and maintain their Power Monitoring Expert (PME) systems to best meet their needs. Students will learn how to design PME systems and plan system deployments. The students will proceed to build up their systems by adding meters, adding user accounts, configuring meter hierarchies, and building custom graphics screens. The course will also cover integrating PME with 3rd party hardware, as well as database management, system maintenance and backup, and disaster recovery.

### Delivery Type:

Classroom or VILT

### Who should attend?:

This course is designed for anyone responsible for administering, maintaining, and/or supporting a PME system, such as system administrators (and possibly IT Admins), as well as advanced PME users.

### Prerequisites:

- A basic familiarity with using PME
- A reasonable understanding of Microsoft Windows operating systems
- A basic working knowledge of power and energy will be helpful

### Students will be able to:

- Understand and utilize system specifications to design a PME system
- Install the PME software
- Explore new cyber security features for user management
- Add meters and other hardware devices to the PME system
- Configure Logical Devices and Hierarchies to simplify data aggregation and extraction
- Design and build custom graphics screens
- Incorporate 3rd party devices into the PME software
- Understand database structures and modify or adjust default database maintenance tasks

**EcoStruxure**  
Innovation at Every Level





# Factory Classes: EcoStruxure Power Monitoring Expert Software

## EcoStruxure Power Monitoring Expert (PME) Advanced Programming

Course Reference Number: 3000PMUPROG300  
SE Product Number: 3000PLUC4DAY

### Overview (three days):

This advanced programming course focuses on system and device level customization using the Designer interface in PME software. Students will learn the architecture of the ION meter along with using the Designer interface to examine the default frameworks. Students will be guided through a series of lab activities to create custom applications for equipment monitoring, alarming, and logging. Students will learn to program the Virtual ION Processor (VIP) for special applications such as data aggregation and event driven reporting.

Students will then have the opportunity to create a custom virtual meter framework by aggregating multiple meters in the VIP, and displaying the real-time and historical information from that newly created meter in the Vista application. Students will learn the differences between the default meter templates and firmware versions that can be pushed to devices and be able to describe each. At the end of the course, students will have created frameworks for integrating the several types of WAGES devices available, program frameworks that will perform process and control applications, and implement more advanced power quality functionality within ION meters.

### Delivery Type:

Classroom or VILT

### Who should attend?:

This course is designed for anyone who works with an PME system and has reasonable knowledge of the default functions of ION meters and PME software. This course may be appropriate for meter/instrumentation technicians, system engineers, and system integrators who need to learn how to get the most out of their PME software and associated meters.

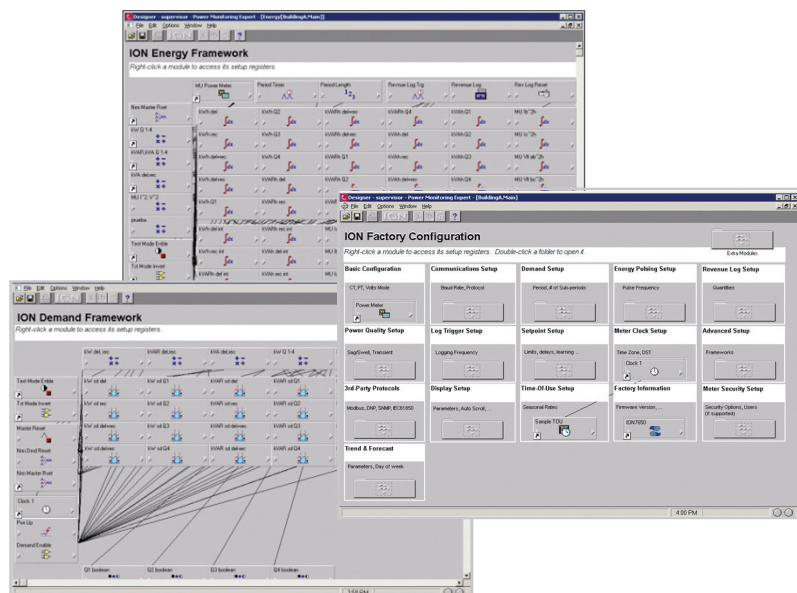
### Prerequisites:

- Working knowledge of PME software, especially experience using Vista
- Working knowledge of the default capabilities of ION meters
- General computer skills and basic working experience with Microsoft Windows
- Completion of a PME Fundamentals, Operation, or Overview course is recommended

### Students will be able to:

- Describe ION architecture and ION module properties
- Examine configuration of meters installed in a PME system
- Understand the procedure to backup and restore a meter template
- Construct programs to perform custom calculations
- Describe how Designer and Vista work together
- Build programs for logging and alarming
- Construct programs for Advanced WAGES metering
- Build programs to read Modbus registers from one device to an ION meter
- Program applications to monitor processes and control functions
- Understand the ION Reference document and how to use it
- Learn best practices for programming in Designer

**EcoStruxure**  
Innovation at Every Level



# Other Software Courses

## Power Quality - Identification, Causation and Mitigation

Course Reference Number: 3000PMUPQ350

SE Product Number: 3000PLUC3DAY

### Overview (three days):

This course begins with a focus toward power quality theory that will lead to the identification, causation and mitigation of PQ issues in a facility. You will first gain an understanding of power systems, then move on to PQ basics. The terminology and theories will be covered to lay the ground work for the application of those theories, for PQ event identification within a facility.

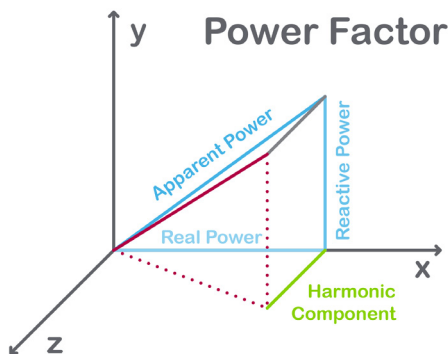
Once those have been discussed, the third day will focus on the mitigation of the issues discovered and discussed prior. The instructor will utilize various training methodologies to communicate the PQ topics. A best practices list will be developed as well.

### Delivery Type:

Classroom

### Who should attend?:

Anyone responsible for the power monitoring system in a facility from an engineering and analysis or reliability and uptime standpoint.



### Prerequisites:

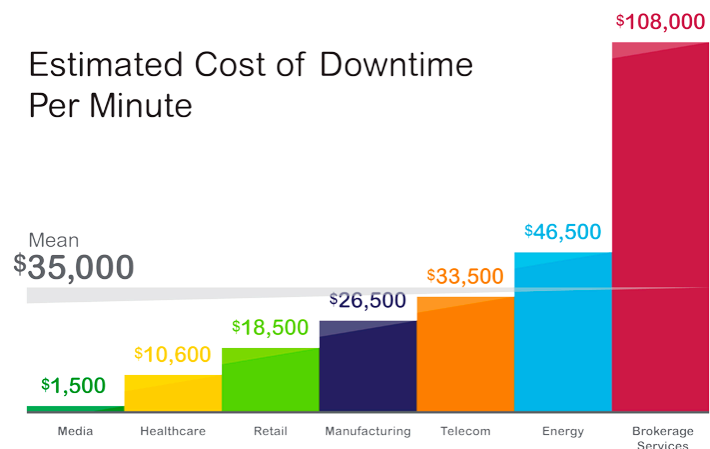
- Basic computer skills and experience with Microsoft Windows
- Basic metering terminology
- Experience with PME or other Power Monitoring software
- Electrical Engineering background or power system experience
- Watch PQ videos on [Karl's Corner](#)

### Students will be able to:

- Understand power systems – “The Big Picture”
- Understand PQ basics
- Diagnose where PQ problems originate from
- Understand commonly used PQ terminology
- Understand current PQ standards
- View waveforms that represent PQ issues and understand and practice the process for analyzing such waveforms (local facility software can be used if PQ capability in software is available)
- Understand how PQ and reliability are connected
- Understand and explain about harmonics; what they are; where they come from; and the impact they have on equipment
- View harmonics and understand the thought process for analyzing such charts (local facility software can be used if harmonic capability in software is available)
- Understand and explain PQ fundamentals; how it works in specific equipment (VFDs, lighting, motors, process control equip, standby power generators, telecom, transformers, etc.)
- Understand and explain methods of mitigating power and PQ issues. Poor PF, harmonics, Flicker and voltage regulation.

**EcoStruxure**  
Innovation at Every Level

### Estimated Cost of Downtime Per Minute





# Other Software Courses

## Hardware Installation and Troubleshooting

**Course Reference Number:** 3000PMUHW250

**SE Product Number:** 3000PLUC4DAY

### Overview (four days):

This 4-day course focuses on installation and setup of PowerLogic and ION metering. Participants will identify and resolve meter setup issues, CT and PT wiring issues, and meter communication network issues. Participants will examine the capabilities of specific PowerLogic and ION meters and learn how to select the correct meter for different metering points in a facility.

Participants will explore the features of PowerLogic communication gateways and practice setup and configuration. The ION Setup Utility will be used to display real-time data tables for the purpose of verifying that meter CTs and PTs are correctly wired to the meters. The ION Setup Utility will also be used to setup logging and event detection for each meter in the system. Participants will also create and manage a basic system in EcoStruxure Power Monitoring Expert. This course provides an introduction to installing and setting up a metering system utilizing PowerLogic and ION hardware.

### Delivery Type:

Classroom

### Who should attend?:

Anyone who will be designing, installing, configuring, troubleshooting or maintaining PowerLogic and ION metering and communication devices.

### Prerequisites:

- Basic computer skills and experience with Microsoft Windows
- Working knowledge and understanding of electrical terminology, concepts and calculations, including an understanding of the relationships among current, voltage, power and power factor in three-phase circuits.

### Students will be able to:

- Understand basic power fundamentals and terminology
- Determine the capabilities of specific PowerLogic and ION metering devices
- Use the PowerLogic and ION meter front panels
- Use the ION Setup Utility to troubleshoot CT and PT wiring issues
- Use the ION Setup Utility to modify and save meter configurations
- Explain how to correctly mount and wire PowerLogic and ION meters
- Upgrade the firmware of PowerLogic meters and ION meters
- Troubleshoot meter wiring and communication issues
- Configure PowerLogic gateways for device communications
- Add PowerLogic and ION meters into a EcoStruxure system
- Create a simple power monitoring system in EcoStruxure PME
- Generate a Vista diagram and create basic Vista objects

**EcoStruxure**  
Innovation at Every Level



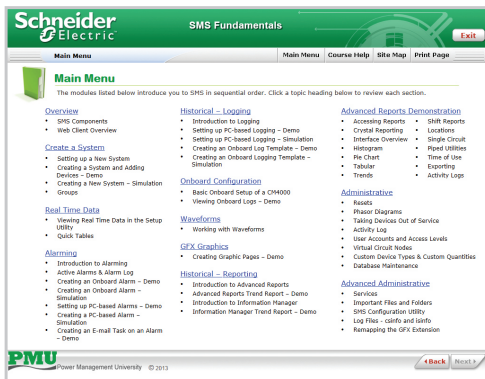
# Other Software Courses

## SMSTrainer (self-paced)

Course Reference Number: 3000PMUSMST1100

### Overview (54 modules):

This online course provides a comprehensive overview of the capabilities of a PowerLogic Power Monitoring system using System Manager Software (SMS4.x). The course is designed to look at a system that is already commissioned and logging data. Within this course, students will learn the benefits to monitoring power and how to extract real time or historical data from their SMS4.x system.



### Who should attend?:

Anyone who is currently using SMS4.x to manage their facility's energy usage.

### Prerequisites:

- Basic Computer Skills
- Understanding of basic metering terminology
- Understanding of basic power quality terminology

### Students will be able to:

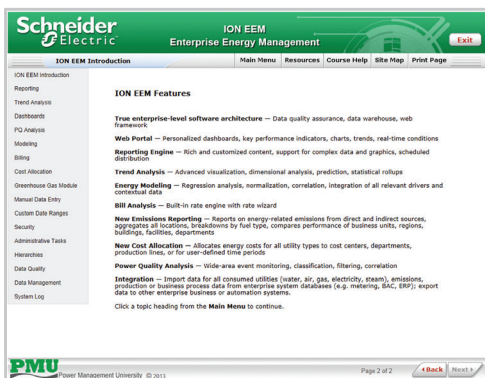
- Select and differentiate between the different products of the different components of a PowerLogic Power Monitoring system
- Extract data from a PowerLogic power monitoring system using programs within the system
- Develop cost reduction strategies with the information you extract from the system
- Audit their existing system to determine system design and device configurations
- Make changes to an existing system like add a device using SMS Setup Utility

## EEMTrainer (self-paced)

Course Reference Number: 3000PMUEEMT1200

### Overview (77 modules):

This online course focuses on how to use an EEM system effectively. Students will learn how to configure trends, view historical data, and create reports. This course provides a comprehensive overview of the capabilities of an EEM system and the practical skills to use it successfully.



### Who should attend?:

Anyone who will be or is already using EEM.

### Prerequisites:

- Basic Computer Skills
- Understanding of basic metering terminology
- Understanding of basic power quality terminology

### Students will be able to:



- Explain key features of EEM System
- Create trend analyses and data manipulation using EEM software
- Run and understand reports
- Create models for systems
- Create and share dashboards
- Create external web links for their dashboards
- Manually enter data using manual data entry interface
- Create data quality templates and reports with administrative tool
- Learn the concept of hierarchies and where they are used






## Training On-Demand

The PMU On-Demand Campus contains a wealth of training videos, demonstrations and simulations. New content is added on a regular basis.

[My account](#)
[Favorites](#)
[Contact us](#)
[Logout](#)

[Home](#)
[Meter Hardware](#)
[Power Monitoring Software](#)
[Meter Configuration Software](#)
[Communication Devices](#)



### Learn about the Link150

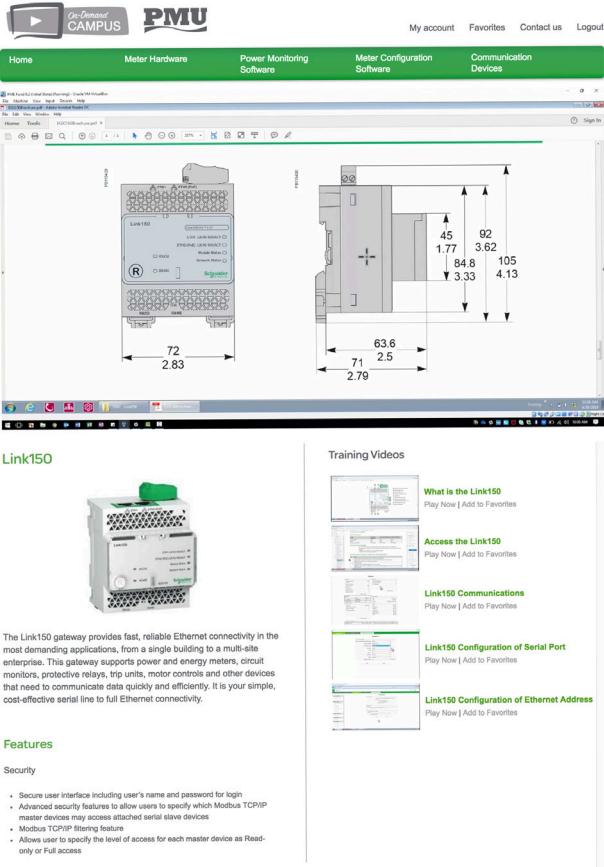
New training videos now available on the On-Demand Campus

#### Meter Hardware

- ION7400
- ION8600
- ION7650
- CM4000

#### Power Monitoring Software

- Power Monitoring Expert - Administration
- Power Monitoring Expert - Operation
- Power Monitoring Expert - Advanced Procedures and Tasks
- EEM (Enterprise Energy Management Software)



### Link150

The Link150 gateway provides fast, reliable Ethernet connectivity in the most demanding applications, from a single building to a multi-site enterprise. This gateway supports power and energy meters, circuit monitors, protective relays, trip units, motor controls and other devices that need to communicate data quickly and efficiently. It is your simple, cost-effective serial line to full Ethernet connectivity.

#### Features

##### Security

- Secure user interface including user's name and password for login
- Advanced security features to allow users to specify which Modbus TCP/IP master devices may access attached serial slave devices
- Modbus TCP/IP filtering features
- Allows user to specify the level of access for each master device as Read-only or Full access

#### Training Videos

- [What is the Link150](#) Play Now | Add to Favorites
- [Access the Link150](#) Play Now | Add to Favorites
- [Link150 Communications](#) Play Now | Add to Favorites
- [Link150 Configuration of Serial Port](#) Play Now | Add to Favorites
- [Link150 Configuration of Ethernet Address](#) Play Now | Add to Favorites

## Get Access

If your company has a support account, you may already have access to the On-Demand Campus (ODC) .

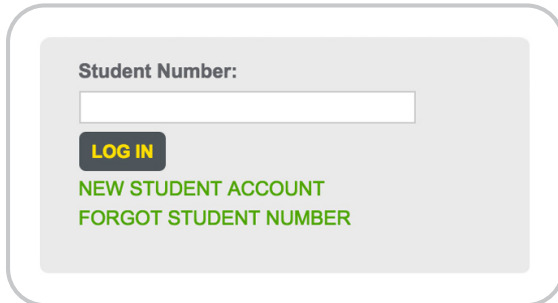
[www.pmutraining.com/online](http://www.pmutraining.com/online)

*Contact your Schneider Electric Regional Sales Representative to find out more.*

Course Reference Number: 3000PMUODC1000  
SE Product Number: 3000PMUDEMAND12

Register online by visiting: [www.pmutraining.com](http://www.pmutraining.com).

## 1. Log In Using Your Student ID



Log in with your existing Student Number or create a new student account and log in.

If you have forgotten your Student Number, you can retrieve it by clicking on “FORGOT STUDENT NUMBER” and providing your email address.

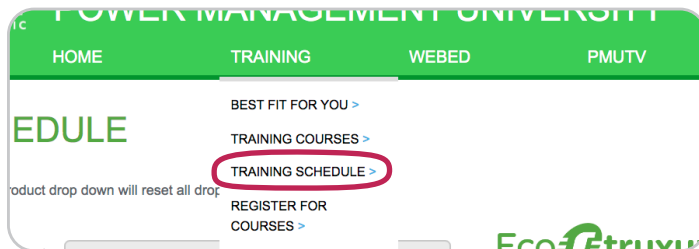
## CREATE A STUDENT ACCOUNT!

Log in at anytime by using the Student Number **se05682la** and your email address.

*Note for New Users: When you create a new account, your Student Number will appear on the confirmation page after you submit your Student Account Profile information. It is also sent to the email address you have provided.*

*Be sure to note your uniquely assigned user ID.*

## 2. Search for and Select a Class

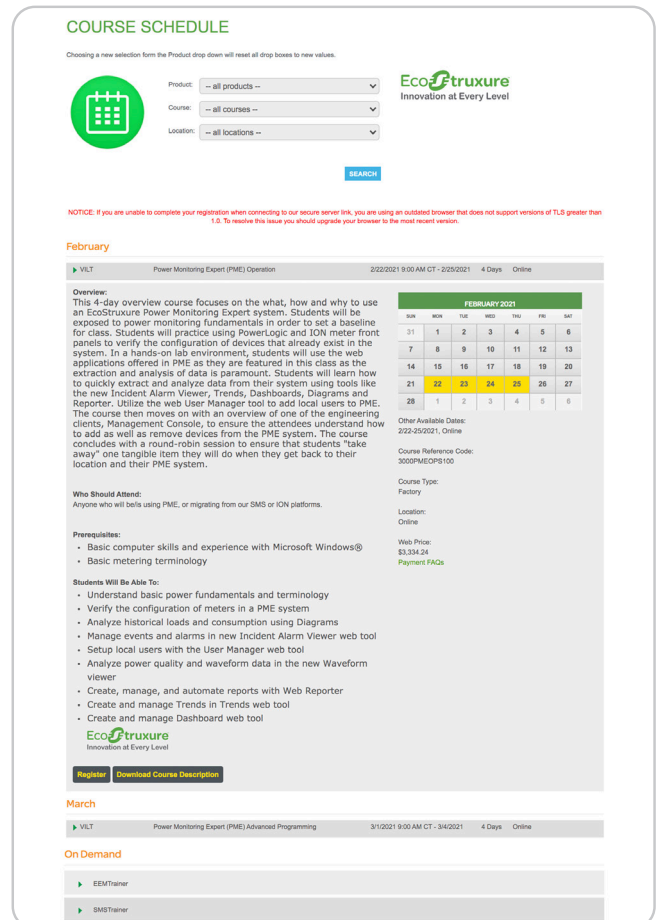


Click on “Courses > Training Schedule” from the top menu.

From the “Course Schedule” page, you can:

- View a list of scheduled courses
- Easily find dates for classes you are interested in
- Find course catalog numbers and pricing
- Download course descriptions with agendas
- Find specific course hours
- See logistics information
- Read information on payment options

Don't forget to add our email address: [PowerLogic.University@se.com](mailto:PowerLogic.University@se.com) to your approved sender list to ensure that you are able to receive important communications from us regarding courses for which you have registered.



### 3. Submit Payment Information

Select your payment type and enter your payment information:

Life Is On | **Schneider Electric** POWER MANAGEMENT UNIVERSITY

HOME TRAINING WEBED PMUTUBE RESOURCES

## PAYMENT INFORMATION

Your Name: Name  
Your Company: Schneider Electric  
Course Registering For: EcoStruxure Power Monitoring Expert (PME) 9.x Operation Bundle - 3000PMUOPS300B  
Location: Nashville (Franklin), TN  
Date(s): 2/22/2021-2/25/2021

Please fill out the form below to register for this course. A valid form of payment is required to register.

[Payment FAQs](#)

Course Payment Options:

- ✓ -- Please select an option --
- Credit Card
- PO Number
- Prepaid Voucher
- Schneider Electric employee

SSL

COMODO SECURED  
Point to Verify

NEW!

Register for Training Here!

Download Our Course Catalog

See what's new

Course Payment Options:

Credit Card

Visa, Mastercard and American Express are accepted. Subject to individual approval.

Enter Discount Code (if applicable):

Course Payment Options:

PO Number

All purchase order registrations will now require the prior issuance of a formal sales quote. For more information on how to obtain your quote, please visit the Purchase Order section of our Payment FAQ's page at <http://www.pmutraining.com/paymentfaqs.cfm>.

Sales Quote Number:

PO Number:

A valid copy of your/your distributor's PO is required in order to guarantee your training seat/s.

Enter Discount Code (if applicable):

Course Payment Options:

Prepaid Voucher

A voucher number will contain 3 or 4 hyphenated sections beginning with one of the following prefixes: V3; V4; V4B; PPV3; PPV4; PPV4B. Please enter the number, complete with dashes.

Voucher Number:

Course Payment Options:

Schneider Electric employee

Student's Cost Center Number:

Manager's Name:

Schneider Electric. | Home

You must enter/submit a valid form of payment in order to receive your final email confirmation, which guarantees your seat in a class.

Please visit [www.pmutraining.com/paymentfaqs.cfm](http://www.pmutraining.com/paymentfaqs.cfm) for additional information on:

- Payment process details based on chosen form of payment
- How to locate a Schneider Electric USA distributor in your area
- How to request an official training quote
- How to register using a coupon
- How to register with a discount code



# PMU Course Summary Sheet

**1** Choose a course from the list below

**2** Check the PMU website for dates of availability

**3** Log in with your Student ID and register for your chosen class

Please email us at [PowerLogic.University@se.com](mailto:PowerLogic.University@se.com) or call us at 615-538-9809 should you need any assistance with the registration process.

Course	SE Product Number	Course Reference Number	Length
EcoStruxure™ Software Solutions Factory or VILT Classes			
PME Operation	3000PLUC4DAY	3000PMEOPS100	4 Days
PME Administration and Maintenance	3000PLUC4DAY	3000PMEADMIN200	4 Days
PME Advanced Programming	3000PLUC4DAY	3000PMEPROG300	4 Days
Other Software Classes			
Power Quality - Identification, Causation and Mitigation	3000PLUC3DAY	3000PMUPQ350	3 Days
Hardware Installation and Troubleshooting	3000PLUC4DAY	3000PMUHW250	4 Days
Self-Paced Training Solutions			
On-Demand Campus (one-year subscription – online access)	3000PMUDEMAM12	3000PMUODC1000	12 mo.
SMSTrainer (one-year subscription – online access)	3000PMUDEMAM12	3000PMUSMST1100	12 mo.
EEMTrainer (one-year subscription – online access)	3000PMUDEMAM12	3000PMUEEMT1200	12 mo.
Educational Hardware			
PMU Education Kit with ION9000, ION8000 and ION5000 meters	3000PMUTRAINLAB	PMUTRAINLAB9	n/a

## Forms of payment accepted\*:

### 1. Credit Card\*\*

Visa®, MasterCard®, or American Express® are accepted.  
Subject to individual approval.

### 2. Purchase Order†

All purchase order registrations will require the prior issuance of a formal sales quote. Please note that it can take up to 3 weeks between requesting a sales quote and the processing of your received PO depending on the response time of each party. The PO must be received no later than 5 business days prior to the course start date.

### 3. Prepaid Voucher

Prepaid vouchers are issued electronically to a designated recipient at your facility. Please refer to that email to retrieve your uniquely assigned voucher number and for step-by-step registration instructions.

For additional registration/payment information, including discounts, sales quotes, and information about Prime and Ultra Support Level Packages, please visit: [www.pmutraining.com/paymentfaq.cfm](http://www.pmutraining.com/paymentfaq.cfm)

Please note that Credit Card and Prepaid Voucher are the only accepted forms of payment when registering for any VILT classes.

**Please be aware that a registration receipt email is not your final confirmation.** We strongly recommend booking refundable airfare and lodging. Schneider Electric is not responsible for any fees incurred for travel as a result of course changes or cancellations.

## Billing Policy:

A valid form of payment is required to confirm your registration.

## Cancellation Policy:

Schneider Electric or Power Management University (PMU) reserves the right to cancel any course two weeks in advance, upon which any/all registrants will be notified. **Students will be notified by email, so please ensure that the email address in your student account remains current and correct**

Schneider Electric USA/Power Management University (PMU) reserves the right to change course schedule, change training format, modify course content, and limit class size. Our full terms and conditions are available at: [www.pmutraining.com/paymentfaq.cfm](http://www.pmutraining.com/paymentfaq.cfm)

Please check our website at [www.pmutraining.com](http://www.pmutraining.com) for the latest available schedule and for more information on the following:

- > New factory class offerings
- > Customized Onsite training
- > More information on the On-Demand Campus
- > The latest videos on PMUTV

## Schneider Electric USA

6700 Tower Circle, Suite 700

Franklin, TN 37067

615-538-9809

[PowerLogic.University@se.com](mailto:PowerLogic.University@se.com)

[www.pmutraining.com](http://www.pmutraining.com)

Doc# 3000CT0702R01/21

\*Once the online registration has been submitted, an automated email will be sent to the student confirming that it has been received. Once all the required form of payment information is received, verified and/or processed, a final email confirmation will be sent to the student guaranteeing their seat/s in the training class.

Please email us at [PowerLogic.University@se.com](mailto:PowerLogic.University@se.com) or call us at (615) 538-9809 should you have any difficulties with this process.

\*\*Credit card payments via Visa, MasterCard, and American Express are subject to individual approval.

†Please note that invoicing against purchase orders may not take place until after the student's attendance has been confirmed in the class. Possible exception: Prepaid Vouchers orders without an accompanying registration.

‡Please contact the Support Department at [Service.Agreements@se.com](mailto:Service.Agreements@se.com) for questions regarding the following:  
Support renewal/activation status access to On-Demand or the Knowledge Base through your Support Package.